



Pro Poly of America, Inc, (PPA) builds the finest tanks in the industry. When installed properly, the tanks are warranted for the life of the truck. Please follow these installation requirements. If you have any questions, please call customer service at (352) 629-1414.

INSTALLATION REQUIREMENTS

The tank has eyebolts installed in the lifting pegs for use in installation. Your lifting device should be connected to the eyebolts with a "sling" which has an angle of 90°.

Unless otherwise specified, the tank must be isolated from the subframe of the vehicle through the use of rubber strips with a minimum dimension of 1/4" x 2", 60 Durometer.

The tanks shall rest on a sub frame with 1 1/2" x 3" x 1/8" wall tubing or 3" x 4.1 # C channel at a minimum. The sub frame cross members must be spaced at a distance that would not allow for more than 400 square inches of unsupported area under the tank floor.

The tank must be cradled around the entire bottom perimeter and supported both front and rear as well as side to side to prevent tank from shifting during vehicle operation. You are responsible for adequately containing this tank.

One method of containment is a picture frame type cradle designed with a minimum of 2" x 2" x .25" steel or aluminum angle. Where aluminum or steel tubing and channel sub frames are incorporated in the body structure, the use of vertical corner angles having a minimum dimension of 4" x 4" x .25" thick x 6" high are permitted for cradling the tank.

Also, in addition to forward and aft containment and side to side containment, the tank must be restrained from vertical movement. One option is tank floor mounting blocks. The mounting blocks require minimum 3/8 - 16 stainless steel bolts which must not exceed 7/8" length above tank floor. The bolts must be used with springs for flexibility.

Hose floor loading must support 200 lbs. per square foot. Equipment such as generators and pumps must not be mounted directly to the tank top unless provisions have been provided by PPA in advance.

All tank connections must be of a flexible design.

All "T" type tanks with a rear step overhang exceeding 18" must have full length cross members 1 1/2" x 3" x 3/16" supporting the overhang. The cross members shall be isolated from the tank with rubber strips.

Do not drill holes or install fasteners on the tank surface without first obtaining approval from PPA.

Tanks over 1,000 gallons: max fill rate 1,000 gpm at max fill pressure 100 psi. Tanks under 1,000 gallons: max fill rate 500 gpm at max fill pressure 100 psi.

This sticker is a summary only and is not meant to replace our complete installation guide. Please see our complete Polyprene Installation Instructions for further clarification. You may obtain a copy of our Installation instructions at www.propolyamerica.com

THIS TANK INSPECTED FOR SHIPPING BY: _____

"Therefore, as we have opportunity, let us do good to all..." Galatians 6:10

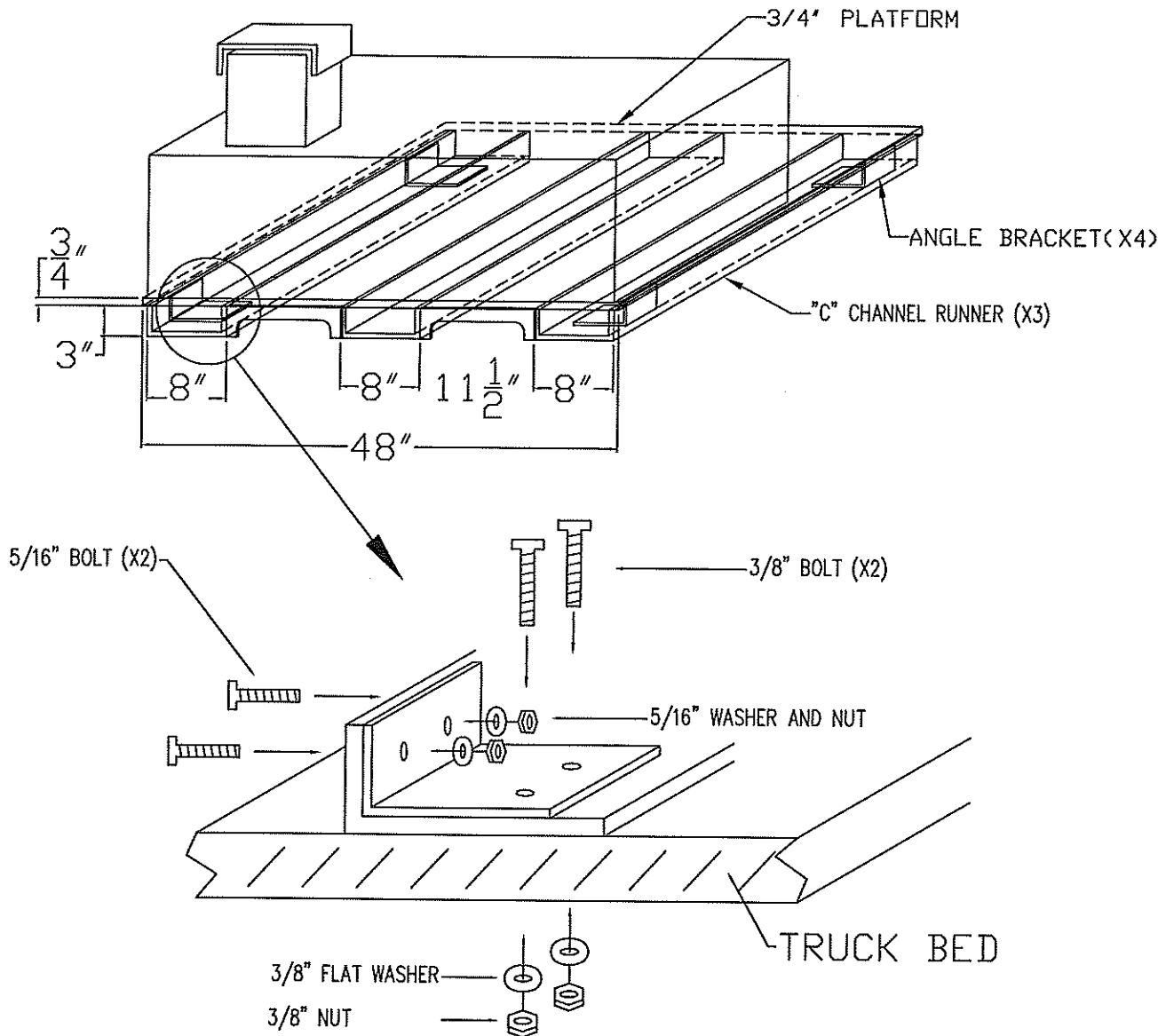


SKID MOUNTING SPECIFICATIONS

Your Protector Series skid will have either "C" channel runners on the bottom or it will have a flat bottom. The "C" channel runners are primarily for ease of lifting and moving the tank but they also provide a convenient means of fastening the tank to the truck.

Tanks with skid runners shall be mounted to the truck bed by placing a minimum 2 1/2" by 2 1/2" by 5" aluminum or steel angle brackets with 1/4" minimum thickness in each corner of the skid frame. (For ease of installation, we recommend a 2 1/2" by 5" by 5" angle.) Each bracket shall be fastened to the skid runner with (2) 5/16" bolts and fastened to the truck bed with (2) 3/8" bolts. The location of the bracket shall vary to allow clearance to assure the 3/8" bolts fastening the tank to the truck bed can be secured with a flat washer and a nut.

FIGURE 1: "C" CHANNEL MOUNT

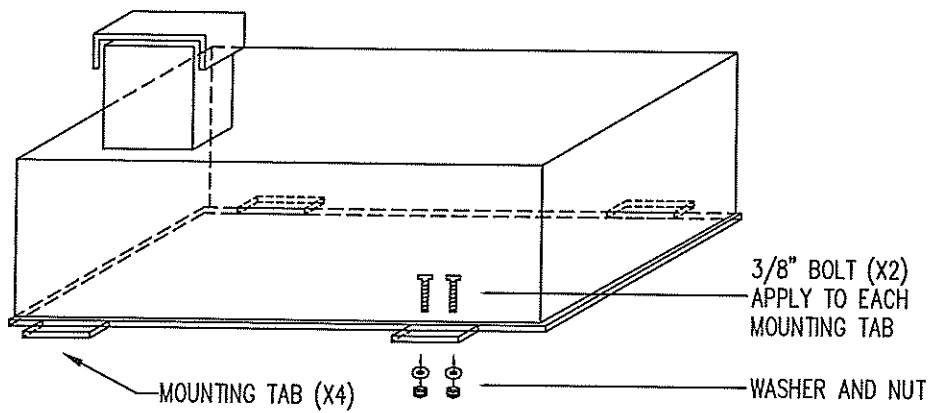




SKID MOUNTING SPECIFICATIONS

Skid tanks without raised skid runners on the bottom will typically have either an extended floor or mounting extensions on the bottom of the tank. This allows for a simple method of mounting placing bolts through the mounting tab and truck bed floor and securing underneath with a nut and washer.

FIGURE 2: FLAT MOUNT (MOUNTING TAB STYLE SHOWN)



NOTE: SAME NUMBER OF BOLTS USED IF TANK HAS EXTENDED FLOOR FOR MOUNTING